

OneRun targets - procedure

The OneRun target, in combination with Curve3's VPR (Virtual Press Run) module, makes it possible to calibrate a printer to G7, using multiple papers, and make profiles for the printer - all in one press run. The beauty here is that you only have to print one target, on one press run to do all this. Press calibration and profiling can't get much easier than this!

This is how it works: To save on space, time and reduce measurement error we've created new, hybrid targets that combine the P2P target with IT8 and other profiling targets. Redundant patches have been removed and the resulting target is smaller and easier to place on a variety of printing forms. Your measurements of this single target, printed on all your papers, are fed into Curve2 or Curve3. The software extracts the individual targets from the OneRun target using the P2P patches for curve calculation and the other patches for VPR curving and profiling. All of your papers + one target = OneRun.

Currently we have OneRun targets which incorporate:

- The P2P target and the IT8 target (most popular for press profiling)
- The P2P target and the HC2052 target (a larger press target containing more neutrals and darker patches). The HC2052 was developed by Don Hutcheson.

These instructions, including a link to download sample targets, is available at the following ColorWiki page:

<http://www.colorwiki.com/wiki/OneRun>

Get the software

Curve3 can be purchased and downloaded from the CHROMiX website:

<https://www2.chromix.com/colorgear/shop/curve3>

<https://www2.chromix.com/curve3/download>

Get the target



Contact CHROMiX to have us send you a OneRun target. Specify:

- What **size** target you would need (based on the size of your press and your measuring equipment),
- Whether you want the IT8 version or the HC2052 version,
- Whether you measure using Colorport, MeasureTool, or i1Profiler.

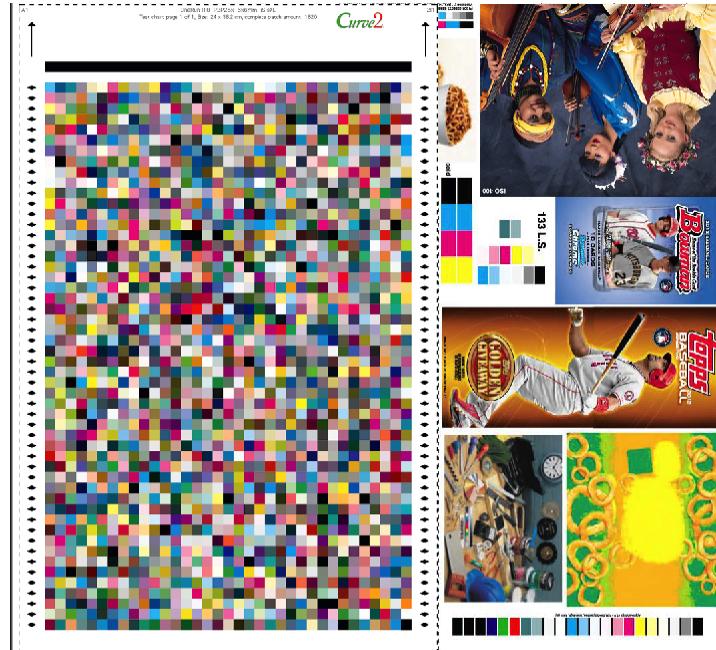
support@chromix.com

866-247-6649 ext. 2

These instructions, including a link to download sample targets, is available at the following ColorWiki page:

<http://www.colorwiki.com/wiki/OneRun>

Print image



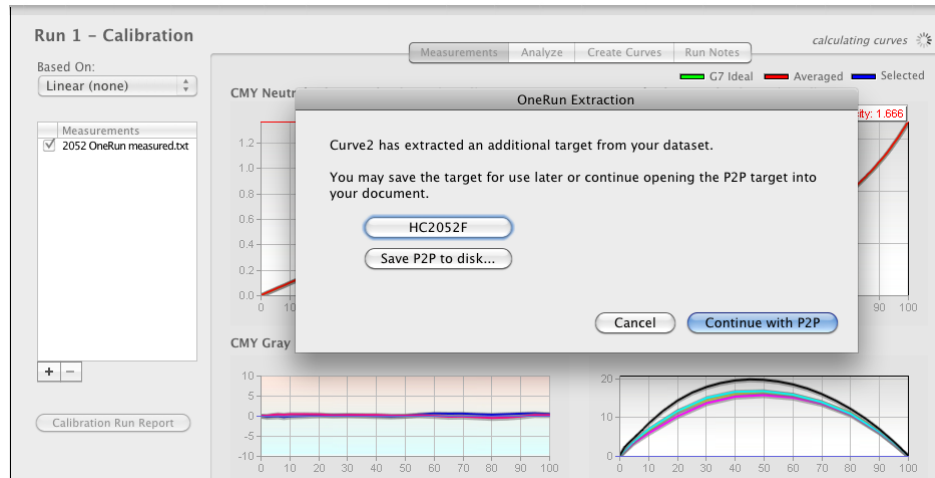
Print your press sheet on your press using the usual procedures for running an initial G7 press run.

Measure OneRun target



Measure the OneRun targets from your press run, and save the measurement files.

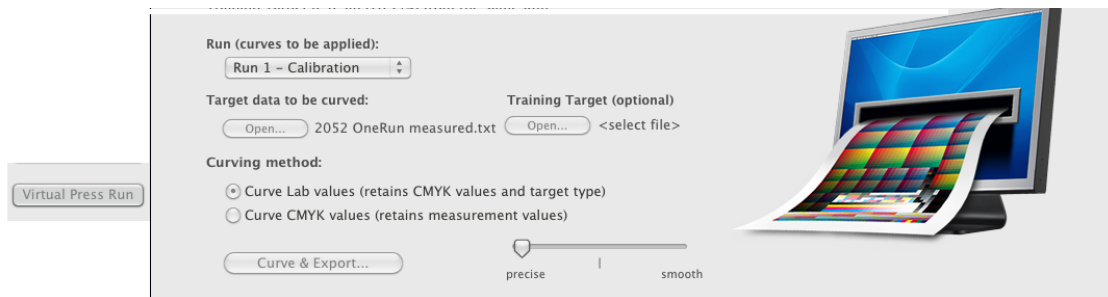
Bring measurements into Curve



Curve will automatically detect the P2P targets and the profiling targets, & offer to let you save them and continue with the curve workflow.

At this point, you just need to click "Continue with P2P" in order to enter your G7 data into Curve.

Virtual Press Run



When it is time to create your press profile, you would:

- Click on the VPR button in Curve
- Choose the run with the curves you wish to apply to the profiling target (usually the last run)
- Choose the profiling target measurement you made (either an IT8 or a HC2052)
- Click Curve & Export

VPR will apply the curves to the measurement data of the press profiling target. You can then take this "curved" measurement and build a profile using your normal profiling engine. This profile will accurately reflect the condition your press is in as a result of being curved to the G7 method!